



STV Trulock™

Multi-Point Door Locking System
for timber and composite doors



in
Doors

Winkhaus UK Ltd

2950 Kettering Parkway, Kettering,
Northants NN15 6XZ
Tel: +44 (0)1536 316091
Fax: +44 (0)1536 419091

www.winkhaus.co.uk
email: enquiries@winkhaus.co.uk



FS40006

made in
GERMANY

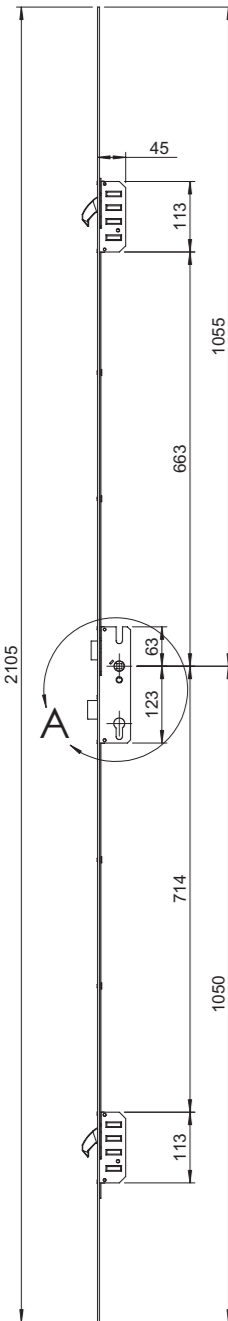


STV Trulock™

Multi-Point Door Locking System for timber and composite doors

The Trulock™ Multi-Point Locking System from Winkhaus has been especially developed primarily for the composite, steel and timber door market.

Its major feature is an enhanced tensile steel hook design with a 4.5mm chamfer which offers reduced operating forces and increased on-site installation tolerance.



The Trulock™ range is available with several faceplate and backset options:

Faceplate:

- 16mm square end
- 16mm round end
- 20mm square end
- 20mm round end
- 44mm 'U' rail square end

Backset:

- 35mm
- 45mm
- 55mm

Operation:

- Lever operated
- Split Follower lever operated
- Key operated

With over 150 years experience in producing locking systems for the world market Winkhaus is a market leader producing innovative security solutions to meet the challenges of today's rapidly changing security and ease of use requirements.

Features:

- Enhanced gearbox design with the very latest security and low operating force features.
- 25mm throw tensile steel and nickel plated 'low friction' hook locking points.
- Anti 'push-back' Trulock™ hooks locate behind the steel security keeps for optimum security.
- 'Silver' or Stainless steel face plate options.
- Solid and powerful transmission providing continuous power throughout the full locking action.
- Soft feel cylinder action with low operating forces to turn the key.
- Compatible with Winkhaus Palladio™ Door handles with optional latch snib feature.
- Tested in Doors to PAS 23/24 Enhanced Security Standards
- 10 year mechanical warranty as standard plus House Insurance excess compensation in the unlikely event of a successful forced entry *

Superbly engineered and manufactured in Germany the Trulock™ Locking system is approved by the Police 'Secured by Design' security initiative. This important independent endorsement is an essential requirement of the Association of British Insurers.

1 25mm throw tensile steel hooks

High security solid Steel and nickel plated hooks fully penetrate the keep rail and help prevent forcing apart of the sash and frame.

2 Weather seal compression adjustment in the keeps

Together with the enhanced tapered hook design the adjustment in the keeps provides for low operating forces. With ± 2 mm adjustment it is possible to adjust for misalignment of the door during and after installation.

3 Heavy duty steel keep rails

Depending on door frame material, 20mm – 24mm wide heavy duty steel keeps are manufactured using high grade steel, plated to comply with the highest Grade 4 corrosion resistance requirement of BS EN1670 European Standard.

4 Latch and deadbolt

Zinc die cast sprung latch with 16mm or 20mm throw nickel steel deadbolt provides the Trulock™ with maximum strength in the centre of the door.

5 High performance gearbox

Tested to 100,000 cycles the sprung gearbox offers the lowest possible operating forces and helps prevent handle 'droop'.

6 Cylinders and handles

Trulock™ Multi-point Locks have been designed to harmonise with the Winkhaus range of security euro-profile cylinders both for single domestic dwellings and also for multi-occupancy dwellings where master key systems are required. The 92PZ locking system is compatible with industry standard handles and also with the Winkhaus Palladio™ handle which has OwlMark™ approval for use by the elderly and infirm.

Special key bow designs, fobs, turn knobs and key pistol grips for the disabled are also available.



* Subject to Terms & Conditions